

## CITY/AIDS MEMORIAL TASK FORCE

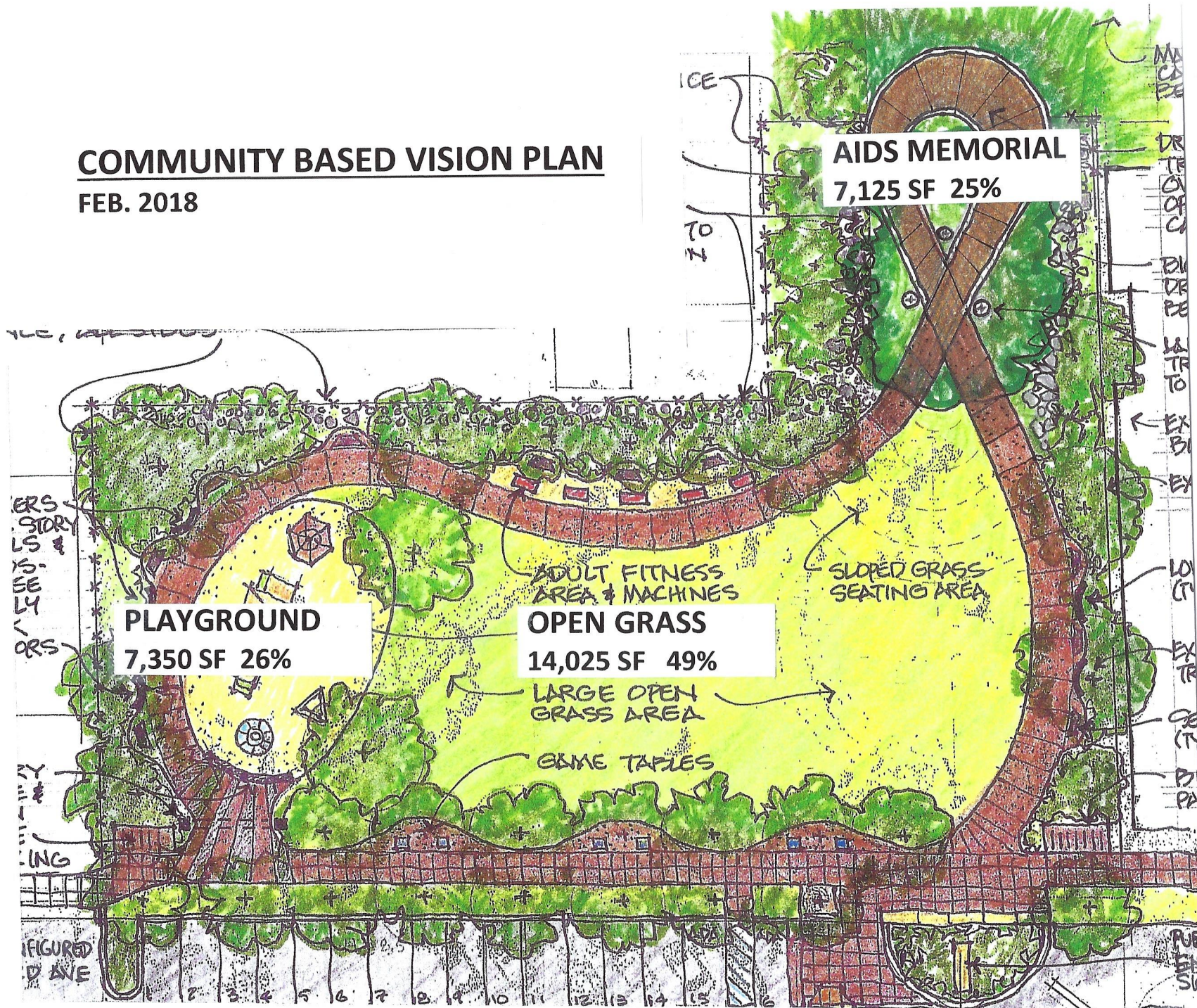
ASSUMED PLAN FEB. 2018 OVERLAID ON  
PREVIOUS CITY/AIDS PLAN OF SEP. 2017





# COMMUNITY BASED VISION PLAN

FEB. 2018









## **OLIVE STREET PARK (WOODS-MC KEE PARK)**

### **The Community Based Vision Plan, Feb. 2018**

#### **A Small Neighborhood Community Centered Park**

##### **LOCATION & USE**

- Ideal park location bounded by low traffic streets
- Neighborhood social gathering point
- Easy walking distance for neighborhood users
- Caters to young families, children and adults
- Balance of active and passive uses
- Reclaims and uses City owned land (NW corner)

##### **COMMUNITY AMENITIES**

- Extensive open space, grassy areas
- Amenities for all age groups provided
- Passive activities and reflection in smaller areas
- Entry gate & signs for Park & neighborhood identification
- Public art at Third Ave and Olive sidewalk bulb out
- Toilet & drinking fountain not needed, homes nearby
- Maximum head-in parking spaces on Third Ave

##### **PUBLIC ACCESS, SAFETY, & SECURITY**

- Decorative security fencing along Third Ave, Optional
- Full perimeter security fencing, 3 Sides
- Excellent visibility of tot lot/playground from street
- Stop signs at Third Ave and Olive for safer ped. crossing
- Bulb out at Third Ave & Olive for shorter crossing distance
- Reconfigured Third Ave slows traffic speeds

##### **SUSTAINABILITY**

- Extensive shade trees, favors planting not paving
- Xeriscape planting and irrigation minimizes water use
- Bio-swales limit water runoff into Maple Canyon

##### **LONG TERM MAINTENANCE**

- Minimal maintenance, park use mainly by neighborhood residents
- Large grassy area for easy maintenance
- Secure perimeter limits overnight access, trash build-up

##### **PARK FEATURES**

##### **NEIGHBORHOOD HISTORY**

- Living History wall documents Woods-McKee families' donation
- Bankers Hill history, development, events and culture displayed

##### **DR. BRAD TRUAX RECOGNITION, PROMINENT LOCAL AIDS PHYSICIAN**

- AIDS ribbon loop motif walkway to recall those lost to AIDS
- Prominent and appropriate overlook honors Dr. Truax
- Honors nearby Truax House Hospice and AIDS crisis in San Diego

##### **RELATION TO MAPLE CANYON**

- Future path/walk to edge of Maple Canyon
- Overlook gives place for contemplation and distant views

##### **LANDSCAPING & HARDSCAPE**

- Extensive shade trees for user comfort
- Curving walk for circulation, visibility through entire park

##### **PLAYGROUND & FITNESS**

- Tot lot and Playground appropriately sized
- Tot Lot has good visibility from street
- Adult outdoor exercise in own area
- Adult exercise machines along walk, overlook open area
- Ample open space for small field games